

## Contents

|  |    |                                     |    |  |    |
|--|----|-------------------------------------|----|--|----|
| Children's Health Fund                 | 1  | Last Mile Health                    | 11 | Medic Mobile                               | 19 |
| Possible Health                        | 2  | Muso                                | 12 | St. Boniface                               | 19 |
| The Water Trust                        | 3  | Shining Hope For Communities        | 13 | Terre des Hommes                           | 20 |
| Partners in Health                     | 4  | Mifan Mama Foundation               | 13 | Harlem Health Promotion Center             | 21 |
| Little Sisters of the Assumption       | 5  | La Chaîne de l'Espoir               | 14 | Maternal and Child Health Catalyst Program |    |
| Covenant House                         | 6  | Coalition for the Homeless          | 15 | at SUNY Albany                             | 22 |
| Northside Center for Child Development | 7  | Many Hopes                          | 16 | 2016 Investment Breakdown                  | 23 |
| NY Foundling (Haven Academy)           | 8  | Réseau des Entrepreneurs Solidaires | 17 | Contact Information                        | 24 |
| Health Builders                        | 9  | Village Health Works                | 17 |  |    |
| The Family Center                      | 10 | IVUmed                              | 18 |  |    |

The Foundation has formed 33 partnerships and has invested over \$21 million for the advancement of children's health in its nine years. From health clinics in Nepal to a mobile medical home for children in the South Bronx, this newsletter highlights the impact that the Foundation's efforts have had on children's lives.

## Children's Health Fund

- Mission:** CHF is committed to providing health care to the nation's most medically underserved children through the development and support of innovative, comprehensive primary care programs, reducing the impact of public health crises on vulnerable children, and promoting the health and well-being of all children.
- Partner since:** 2007
- Description:**
- In 1987, the program was started with a single mobile medical clinic bringing care to children in homeless shelters.
  - Today, through a national network, CHF provides care for 350,000 children in disadvantaged rural and urban communities through 50 mobile medical clinics and 301 medical service sites.
  - Its Flagship Program in NYC serves Harlem, South Bronx, and the NYC homeless population.
- 2016 Funding:** \$675,000
- Project Funded:** [Deerfield Child and Family Health Clinic](#)
- Update:** In 2015, Deerfield granted \$350,000 to the Deerfield Child and Family Health Clinic. One in five visits at the clinic is by an uninsured patient, who is often undocumented and ineligible for Medicare/Medicaid coverage. The grant covers the funding gap at the clinic allowing it to enhance the services and health care access for homeless children. The foundation also granted \$100,000 to expand the clinic, allowing it to double the number of clinical exam rooms to keep pace with the increasing demand. In 2015, CHF scored in the top 5% of national federally-funded health centers for a core set of clinical measureable performances. In 2016, the renovation to the Deerfield clinic will be finished, effectively doubling their capacity.
- Project Funded:** [New York Flagship Program](#)
- Update:** In 2015, Deerfield granted \$350,000 to the NY Flagship Program to help fully fund all healthcare visits at the Flagship Program, which include the NY Children's Health Project and South Bronx Health Center. The program will provide a comprehensive model of care that entails formal evaluations, quality improvement efforts and delivering services well beyond what Medicaid and private insurance plans cover. In 2015, CHF facilitated 16,396 comprehensive health care visits for 3,280 homeless patients, of which 53% were children ages 0-17 years. In 2015 patients served increased by 6%. The grant expects to serve more than 2,500 un- or partially-reimbursable visits in 2016.
- Website:** [www.childrenshealthfund.org](http://www.childrenshealthfund.org)



## Possible Health

**Mission:** Possible Health's mission is to provide high-quality, low-cost care to the world's poor. Possible is intent on making a model for patients to realize the right to health by delivering transparent, data-driven healthcare, which it is currently doing for Nepal's rural poor.

**Partner since:** 2012

**Description:** The organizations is pioneering a new approach, called durable healthcare, that brings together the best of private, public, and philanthropic models. Since 2008, Possible has served over 350,000 patients in rural Nepal through hospitals, clinics, and a network of female community health workers.

**2016 Funding:** \$600,000

**Project Funded:** **The Foundation will provide \$500,000 to complete the construction of the Hospital in the Achham District and \$100,000 to expand the staffing model and services provided in the hospital in the new Dolakha District**

**Update:** No stone remains unturned in the path to health for the Possible team. Although the earthquakes may have ravaged the nation, it catalyzed Possible Health. Possible was able to hit its targets for the original Achham District and expand into a new district in January 2016 where over 46 of the 53 healthcare facilities were damaged or destroyed.



Possible has now completed 95% of the 1st phase of the building effort in the Achham District which included building the housing for the doctors, nurses and workers, and water reservoir for the complex. It also completed 40% of the administration building, outpatient department and inpatient department. Furthermore, it is about to break ground on the main floor of the inpatient space, the emergency room, the lab, pharmacy and surgery suite.

In the new Dolakha District, it is rebuilding 21 clinics and has started operating the central hospital facility for the district in a public-private partnership model. Entering this region is a particular accomplishment as Possible was invited in by the Government as a true partner. The Government is providing a majority of the workers and paying for them. Possible is managing them in the Possible model. They are working hand in hand to create a new healthcare system.

As an additional note, I am pleased to let you know that The Foundation's grant was matched dollar for dollar for any amount given over our \$400,000 grant of last year. Possible was granted an additional \$200,000 by another partner due to the confidence that Deerfield had in Possible. Great News!



**Website:** [www.possiblehealth.org](http://www.possiblehealth.org)

## The Water Trust

**Mission:** The Water Trust (TWT) is a non-profit that teams with communities in East Africa to develop and implement sustainable access to clean water, improve sanitation and promote hygiene knowledge.

**Partner since:** 2008

**Description:**

- 780 million people lack access to clean water and nearly 3 billion do not have access to proper sanitation.
- 1 in 5 deaths of children under five are related to unclean water and poor sanitation.
- 45% of Ugandan's rural citizens lack access to improved water sources.
- TWT partners with villages, schools and health centers in Uganda's Masindi and Kiryandongo regions to implement water and sanitation programs, build wells and latrines and promote hygiene knowledge to fight disease.
- Since 2008, Deerfield has funded 70 water, sanitation, and hygiene projects with a hand dug well in villages and four in schools, benefitting approximately 21,000 people in East Africa.



**2016 Funding:** \$300,000

**Project Funded:** Develop and test 2-3 approaches to enhance the capacity of communities to operate and maintain improved water sources, ultimately identifying a viable model that can be evaluated at scale by TWT, and be replicated by other NGO's and governments

**Update:-**

- The Water Trust's investment in quality parts/continual monitoring has allowed for well maintained and regularly-serviced improved water sources.
- In 2015, TWT:
  - Completed 10 shallow hand-dug wells bringing clean water and complementary software programs to 1,610 people.
  - Installed 5 latrine stances in schools, serving 1,437 children.
  - Improved well quality through the development of a new well design, the retraining of technicians, and the rehabilitation of seven shallow hand-dug wells.
  - Purchased a new motorbike to support the expanding monitoring and evaluation system.
- However, handing over the operations and maintenance of these water sources to communities has not, as of yet, been successful.
- With the 2016 fund, TWT will develop and test 2-3 approaches to enhance the capacity of communities to operate and maintain improved water sources. The intent will be to identify a viable model that can be evaluated at scale by TWT, and, if successful, replicated by other NGO's and governments.



**Website:** [www.watertrust.org](http://www.watertrust.org)

## Partners in Health

**Mission:** Partners In Health (PIH) proves it is possible to provide high-quality healthcare in even the poorest corners of the world. Partnering with sister organizations, PIH has two overarching goals: to bring the benefits of modern medicine to those most in need, and to serve as an antidote to despair.

**Partner since:** 2008

**Description:**

- Since its founding in 1987, PIH has been relentlessly committed to improving the health of the poor and marginalized.
- PIH partners with sister academic, medical, charitable and government organizations to deliver innovative, scalable, sustainable solutions to the world's most intractable health problems.
- Currently operating in eight geographies around the world, PIH is bringing quality care to a service area of 2.47 million people worldwide.

**2016 Funding:** \$200,000

**Project Funded:** **Dambe Health Center, Malawi**

**Update:** In the remote Neno district of Malawi, residents have not had access to routine medical care since unaffordable user fees were adopted at the only local clinics. Therefore, in 2014 and 2015, Deerfield granted a total of \$600,000 to finance construction and launch operations of the Dambe Health Center, which will provide free primary care to the estimated 20,000 area children. Dambe Health Center opened its doors to patients in April 2016, and in the first week provided care to over 500 patients, including over 200 children under the age of 5. PIH is working with the Malawi Ministry of Health on a transition plan to gradually increase government support of the facility's operations from current partial staff and pharmacy funding to eventual full funding and long term sustainability.



*In a testament to the patients' previous lack of access to health care, two-thirds of the patients tested for HIV had never previously been tested, and 47 of the 61 malaria tests were positive—and it was not malaria season.*

**Project Funded:** **Zanmi Beni Home, Haiti**

**Update:** Zanmi Beni was established as a home for 64 disabled orphans who had previously been cared for in a hospital that was destroyed in Haiti's 2010 earthquake. Zanmi Beni provides for the medical, developmental and educational needs of these children in a safe and supportive environment. In 2016, Deerfield granted \$200,000 toward the operating budget of Zanmi Beni and is the only dedicated source of funding. Deerfield's grant supports the children's school attendance, private tutoring, and physical therapy sessions three times a week. This year, construction of new dormitories for children now reaching young adulthood has begun and is expected to be complete in 2017. Because some of these children will require sustainable life-long support, Zanmi Beni has launched income generating ventures, including a bakery, a chicken coop, a restaurant and a fish farm. The fish farm is now the largest and most sophisticated such operation in Haiti, while the chicken coop generates 3,000 eggs weekly and the bakery produces 600 items daily, 7 days a week.



*Patrick is a kindhearted boy who has cerebral palsy and is also deaf. He is very social, known for giving great hugs and always smiling. He loves giving tours of Zanmi Beni, and is lovingly called the "mayor" of ZB. He recently received new hearing aids. Although he still does not have full hearing, Patrick is responding well and can decipher certain sounds and beats.*

**Website:** [www.pih.org](http://www.pih.org)



## Little Sisters of the Assumption

**Mission:** The Little Sisters of the Assumption Family Health Service (LSA) is a neighborhood-based organization founded in 1958 that works with the people of East Harlem (New York) to address the physical, emotional, educational, and spiritual dimensions of family health. LSA's home-based and center-based programs are designed to empower those who are most vulnerable and who have least access to the basic necessities of life, in the conviction that the entire community grows when individuals and families are affirmed in their own dignity.

**Partner since:** 2008

**Description:**

- East Harlem / El Barrio remain home to more underserved and poor residents than anywhere in Manhattan.
- Over 70% of children are born into poverty and they face the worst risks to their health / wellbeing than children living almost anywhere else in NYC.
- The Infant Mortality Rate is 7.6 per 1000 births (4.8 Hispanics, 8.6 for African Americans).
- Asthma hospitalizations for children less than 15 years old is 10 to 12%

**2016 Funding:** \$180,000

**Project Funded:** [The Family Asthma Program](#)

**Update:** LSA's Environmental Health and Family Asthma Program were established in 1997 in response to the high rate of asthma among children in East Harlem. LSA's 12-month program helps reduce missed school and work days, as well as emergency room and hospital visits for those with asthma. LSA's home-visiting community health workers work hands-on to help families modify housing conditions and household living habits in order to improve indoor air quality, asthma symptoms and overall health and wellbeing.

**Project Funded:** [Maternity Outreach Program](#)

**Update:** LSA's Maternity Outreach Program seeks to ensure quality prenatal, post-partum and infant care to poor and immigrant families in East Harlem, and to reduce the high infant mortality rate. Through LSA's Certified Home Health Agency, LSA's registered nurses provide medical care, education about fetal development and physical changes of pregnancy, nutrition for healthy development, parenting techniques and the promotion of social connections to relieve social isolation, among others. In 2015, LSA's six nurses conducted nearly 2,000 patient home visits. Services are available in English and Spanish.



Two key goals of the Maternity Outreach program are (1) 90% of babies whose mothers are participating in the program to be born no sooner than 37 weeks as measured by infant birth weight and (2) 90% of babies whose mothers are participating in the program to attain appropriate development milestones as measured by the Newborn Behavioral Observations Assessment Scale.

**Website:** [www.littlesistersfamily.org](http://www.littlesistersfamily.org)

## Covenant House

**Mission:** Covenant House's mission is "...to serve suffering children of the street and to protect and safeguard all children" with absolute respect and unconditional love. Founded in 1972 with this simple, profound mission to help homeless kids escape the streets, today Covenant House is the largest charity in the Americas providing shelter and essential services to homeless, abandoned, abused, trafficked and exploited youth, serving more than 56,000 homeless youth annually in 27 cities throughout the United States, Canada and Central America.

**Partner since:** 2012

**Description:** Covenant House services include street outreach, emergency shelter, medical and mental health care, Mother and Child residential programs, workforce development and educational programs, legal advocacy, Rites of Passage transitional living programs, and long-term permanent housing support.

**2016 Funding:** \$160,000

**Project Funded:** **65% of the total cost of drugs and medical supplies**

**Update:** The Wellness Center serves over 2,000 youth annually, with a total budget for FY2017 projected at over \$2.3 million. Covenant House is the city's largest residential program for homeless and trafficked youth. There are approximately 350 youth between 16-21 years of age living at Covenant House at any given time. Approximately 60% of the homeless youth who go to Covenant House are young women; and 25% of these are pregnant or parenting, and in need of medical care.

Eighty eight percent of the Wellness Center budget represents personnel costs, most of which are covered by government grants (previously funded in part by the Deerfield Foundation). Non-personnel costs will total over \$275,000 none of which is government funded. Drugs and medical supplies alone will be \$200,000.



- Funds will cover medications for an array of conditions, including inhalers and bronchodilators to manage severe asthma, medications for hypertension, insulin for diabetics, antidepressants and antipsychotic medications, cortisones and steroids for inflammatory conditions, antifungal and antivirals, prenatal vitamins, etc.
- Funds will also cover medical supplies for the Wellness Center include syringes and needles, blood testing kits, sterile specimen containers, sharps container, alcohol prep pads, bandages, ice/hot packs, finger splints, HIV test kits, pregnancy test kits, urinalysis kits, thermometers, nebulizer masks, surgical tape, and specula, among other supplies.

**Project Funded:** **Best Practices Training Program**

**Update:** Deerfield will also be funding a best practices training program, which is aimed to:

- Offer a broad an encompassing mandated curriculum for direct service, supervisory and administrative personnel taught by Covenant House staff as well as experts in field of runaway and homeless youth.
- Support workshops such as LGBTQ focused cultural competency and working with trafficking survivors transitional living program, Rites of Passage, as well as other independent living programs or permanent housing.

**Website:** [www.covenanthouse.org](http://www.covenanthouse.org)

## Northside Center for Child Development

**Mission:** Founded in 1946, Northside Center provides children and families the support they need to overcome adversity and thrive. Northside's high quality outcome-driven behavioral, mental health and education services propel struggling children forward, away from the ill-effects of poverty and racism; toward a future limited only by the scope of their dreams.

**Partner since:** 2015

**Description:**

- Northside's programs operate out of five locations around New York City in Harlem, Brooklyn and the Bronx.
- Northside's programs fall into three main categories: Mental/Behavioral Health, Early Education and Enrichment for children of all ages and their families, and some adults.
- Northside's clinics provide youth and their families with psychiatric, psychopharmacological, and psychotherapy services. Additionally, Northside operates clinics in several schools around New York City that provide mental health treatment during school hours to children who struggle with emotional, behavioral and learning challenges.
- Northside's Early Education Services serve families with children ages zero to eight at their homes, Northside's facilities and at partner organizations within the community. Additionally Northside provides Preschool and School Age Special Education Programs in small classroom environments to children who have been diagnosed with emotional difficulties, behavioral problems, development delays, language disorders, learning disabilities, and/or mild neurological impairment through its Northside Day School Program.
- Northside's enrichment programs offer one on one remedial tutoring, recreational and therapeutic after school programs and summer day camp.



**2016 Funding:** \$150,000

**Project Funded:** 1) EMR system upgrades to capture additional patient data, 2) Upgrade e-prescribing platform to allow for e-prescribing of controlled substances, and 3) Establish a technology platform to allow them to roll out a tele-psychiatry program at 3 to 5 of their clinics.

**Update:**

- In July 2015, Northside hired a medical facilitator (Registered Nurse). Through April 2016, the medical facilitator had performed 947 patient evaluations/assessments, had taken 2,908 vital signs associated with medication management, and had served 455 children and pregnant mothers at Northside's Head Start Programs.
- Additionally, the medical facilitator conducted home and center based parent workshops, coordinated Early Head Start and Head Start nutrition policies and procedures and has networked in each service areas' community to develop health and nutrition collaborations. Billing reimbursements received for these services are now sufficient to cover the cost of this position going forward, enabling expansion of this program.
- The new EMR system upgrades will allow them to aggregate and analyze data to find common areas of medical need and target the health and wellness services that they provide to their families (services they can also bill for).
- By establishing a technology platform to allow them to roll out a tele-psychiatry program at 3 to 5 of their clinics, they will also reduce travel/increase reach and billable revenue.

**Website:** [www.northsidecenter.org](http://www.northsidecenter.org)

---

## NY Foundling (Haven Academy)

**Mission:** Haven Academy Charter School in partnership with the NY Foundling was designed to meet the needs of at-risk students who are currently in foster care and/or receiving preventative services through the child welfare system. By designing a school that addresses the barriers children in the child welfare system face by providing a full range of family support services, children will be better prepared to achieve success in school. By providing greater integration between the education and child welfare systems, the specific demands of the child welfare system on families and students are more efficiently managed to reduce negative consequences for a child's development.

**Partner since:** 2008

**Description:** The entire design of Haven Academy was intentionally planned to address the needs exhibited by students with a history of child welfare involvement. Specifically, it:

- Facilitates integration of education and welfare systems to reduce demands on families and children;
- Provides educational and social services professionals to children and families;
- Provides comprehensive health care with an on-staff pediatric nurse practitioner; and
- Provides comprehensive mental health services.

**2016 Funding:** \$125,000

**Project Funded:** [Funding Middle School Leader](#)

**Update:** As a result of the school's success, the Department of Education enthusiastically urged Haven Academy to expand to middle school grades with a target launch date of 2017-2018. Haven Academy plans to add one grade per year until full capacity is reached at grade 8. Haven Academy needs to hire a Middle School leader to support the efforts to expand its curriculum to the Middle School grades. As the first charter school in the country specifically designed to meet the needs of children in the child welfare system, it is essential to onboard a thoughtful and passionate educator.

**Project Funded:** [Partial Funding for a Pediatric Nurse Practitioner and Prevention Outreach Worker](#)

**Update:** The Pediatric Nurse Practitioner (PNP) provides primary medical care to all Haven Academy students who do not have a centralized medical home, in addition to in-school care far above and beyond the expectations of a standard school nurse. The PNP provides coaching to students and families on various issues, including nutrition, weight loss, and healthy eating habits. The PNP identifies all families without a medical home and is working with them to resolve insurance issues or other barriers preventing them from receiving treatment. Haven Academy's Outreach Coordinator, Annemarie Garcia, ensures that young scholars remain connected and engaged with the school, even during the times of transition and crises that are all too common among youth who are involved with the child welfare system.



**Website:** [www.havenacademy.org](http://www.havenacademy.org)

[www.nyfoundling.org](http://www.nyfoundling.org)



## Health Builders

**Mission:** Health Builders believes that every individual should have access to a local health center that is properly managed and delivers the highest quality of care - even in the places that are hardest to reach.

**Partner since:** Since 2012. Three prior investments: two maternity wards and one health center

**Description:**

- Health Builders applies management principles to health centers so that health workers have the facilities, tools, and medicine they need to save lives. These principles are applied in partnership with the Rwandan government both in existing health centers as well as through the new infrastructure built by Health Builders.
- Health Builders provides health centers with hands-on technical assistance in the following areas: HR, Infrastructure, Financial Management, Health Insurance, Pharmacy Logistics, Data Management, Planning and Coordination, and Information Technology. When health centers are able to function well on their own, Health Builders leaves.

**2016 Funding:** \$100,000

**Project Funded:** **Strengthen Gakenke district's health system**

**Update:** Gakenke district consist of 360,000 residents spread in 615 rural villages and served by 19 health centers. HB is implementing long-term proven management interventions to ensure the 19 health centers deliver the best care to the Gakenke district's population. HB health management advisors



provide technical support, non-medical equipment solutions (e.g., energy-efficient computers, financial accounting software), and management training that offers the ability to manage resources, activity, and time effectively.

Improved management performance in the Gakenke district will create broad access to local, high-quality health care for more individuals in the district, most of whom are children and pregnant women. It will strengthen the health system, improve health outcomes, and ultimately save lives. Changes in health care will be measured via a number of metrics, including access to essential medicines, zero stocks-out, and an increase in patient visits, attended births, and family planning utilization.

**Website:** [www.globalhealthbuilders.org](http://www.globalhealthbuilders.org)

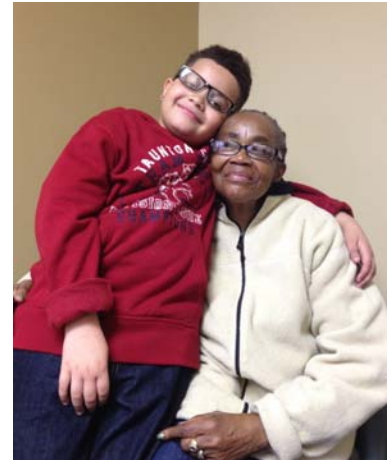
## The Family Center

**Mission:** The Family Center works to strengthen families affected by illness, crisis, or loss to create a more secure present and future for their children.

**Partner since:** 2008

**Description:**

- The Family Center provides expert social and legal services, including healthcare coordination, to vulnerable New York families confronting a crisis or loss.
- Families that receive care either have a parent that is seriously ill, lost a parent, are headed by grandparents, relatives or friends because the parent is ill or absent, or are facing crisis such as abuse or truancy.
- The services provided are coordinated to promote long-term family stability, are regularly evaluated to ensure effectiveness, are individually tailored with an emphasis on home visits, and are confidential and offered at no cost to the family.
- The Family Center works with the families every step of the way as they confront crisis or loss and builds trust and achieves sustainable results.



**2016 Funding:** \$100,000

**Project Funded:** [Path to a self-sustaining organization](#)

**Update:** This has been a very interesting year for the Family Center as they have made great strides to become a self-sustaining organization under the new ACA reimbursement for behavior health treatments for both adults and children alike. This has created an opportunity for the Family Center to apply for reimbursement for the services they provide to children. The Foundation agreed to provide funding to hire the people they need to comply with the new regulations and create the new technological infrastructure they will need. To become fully reimbursed will take about 2 years. This is a major turning point for the Family Center and the Foundation is excited to be a partner in its growth and new trajectory.



**Website:** [www.thefamilycenter.org](http://www.thefamilycenter.org)

## Last Mile Health

**Mission:** Last Mile Health, known in Liberia as Tiyatien Health, seeks to save the lives of women and children in Liberia's most remote villages by improving community healthcare and removing critical barriers to healthcare access.

**Partner since:** 2014

**Description:**

- Since 2007 Last Mile Health (LMH) has pioneered a model Community Health Worker (CHW) system that is redefining rural healthcare delivery, deploying over 275 community health workers in Liberia in partnership with the Liberian Ministry of Health and Social Welfare.
- LMH transforms local health workers into medical professionals that fight diseases such as diarrhea, pneumonia, malaria - the three highest risks to children in rural Liberia - and provide maternal care.
- CHWs deliver basic care and target over 75% of the disease burden that kills rural women and children.

**2016 Funding:** \$100,000

**Project Funded:** **To support a combined effort between Last Mile Health and Government of Liberia to bring a CHW to every remote community in Liberia; specifically, to pay for a minimum of 250 additional CHWs in one new county of Liberia and to increase those CHWs ability to identify and manage illness in 8,640 children under five.**

**Update:** The 2014 Ebola outbreak placed enormous strain on Liberia's already vulnerable health system and highlighted the critical need to strengthen Liberia's health workforce. Though comprehensive post-Ebola health indicators are yet to be determined, it is clear that many previous gains in healthcare have been erased by the epidemic. Additionally, Liberia's community level health system is particularly fractured, with various partners implementing community health programs that differ significantly in services, training and incentives leading to uneven access to health services.



Recognizing the need to rebuild the health system following the Ebola crisis Liberia's Ministry of Health lead a process of defining its priorities to achieve a dramatically improved health system and, with consultation across the health sector, established Liberia's Investment Plan to Build a Resilient Health System that would take effect between 2015 and 2021. The Investment Plan's objective to build a fit-for-purpose, productive and motivated health workforce set in motion a process that led to the creation of Liberia's National Community Health Assistant Program (NCHA) in 2015. With unprecedented political support from President Ellen Johnson Sirleaf and her Cabinet, all of whom recently voted to validate the NCHA Policy, the program is slated to launch at the end of July 2016.

In recognition of eight years of government partnership and significant expertise in community health service delivery and CHW programming, the Liberia MOH selected LMH as its lead national technical partner for this landmark program. In this critical role, LMH will support the Government of Liberia and its partners over the coming two years and beyond to coordinate the training and deployment of approximately 4,100 Community Health Assistants and 230 Supervisors who will extend lifesaving care to every community that lies beyond the reach of the public health system.

**Website:** [www.lastmilehealth.org](http://www.lastmilehealth.org)

## Muso

**Mission:** Each year, over 6,000,000 children die before their fifth birthday, mostly from preventable causes. Project MUSO seeks to develop scalable solutions to the tragedy of early childhood mortality.

**Partner since:** 2015

**Description:**

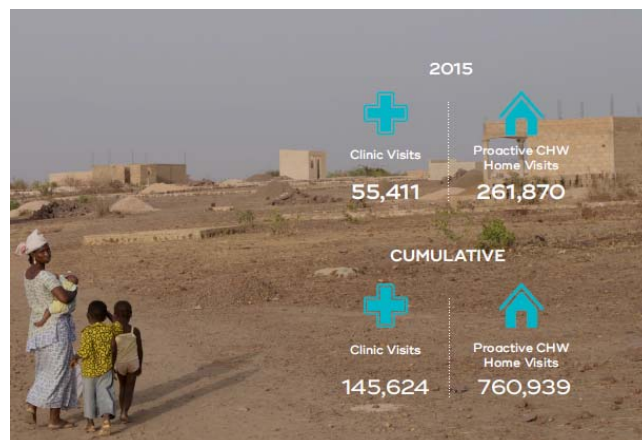
- In 2008, MUSO launched a pilot of its innovative, community-driven healthcare delivery system in a single peri-urban region of Mali.
- Combining three key approaches - proactive search by trained community health workers to identify healthcare needs early, doorstep care, and rapid access clinics - MUSO demonstrated a drop in early childhood mortality from 15.5% to 1.7% in three years.
- This is the largest such improvement ever reported, and results were published in the peer-reviewed journal PLoS ONE in 2013.



**2016 Funding:** \$100,000

**Project Funded:** [Project MUSO expansion](#)

**Update:** In 2015, Deerfield granted \$75,000 to fund a portion Muso's three-year scale-up of its successful healthcare delivery pilot program. We continued our support with a \$100,000 grant in 2016. Muso's original urban intervention site, in Yirimadjo, has expanded staffing to serve 140,000 citizens (vs. an originally expected 100,000), and has seen a 7x increase in home visits over the last year. Meanwhile, Muso's first rural replication site, at Bankass, opened in April 2016, serving 24,000 people across 29 villages in the area. By conducting here a randomized controlled trial, enrolling 22,000 people, to prospectively assess the impact of Muso's interventions, Muso will have the opportunity to help shape the Malian government's recent commitment to implement a nationwide program adding 5,000 Community Health Workers. In March, a global fund grant of \$118M was awarded to Mali, in part to fund the Community Health Worker scaleup, and Muso is working hand in hand with the government to shape implementation.



**Website:** [www.projectmuso.org](http://www.projectmuso.org)



## Shining Hope For Communities

|                        |  |
|------------------------|--|
| <b>Mission:</b>        | Shining Hope for Communities (SHOFCO) combats gender inequality and extreme poverty in urban slums by linking tuition free schools for girls to holistic social services for all. They empower urban communities to thrive through health, education, and economic opportunities while creating the next generation of female leaders through their free schools for girls.  |
| <b>Partner since:</b>  | 2013   |
| <b>Description:</b>    | <ul style="list-style-type: none"> <li>Mathare, Kenya's second largest slum, is overwrought with a densely growing population. In one area alone, 10,000 people occupy approximately 600 households.</li> <li>Residents have inadequate access to services like education, health, and water, but also face the challenge of being further ostracized from society, perpetuating a culture of poverty and deprivation of freedom.</li> </ul> |
| <b>2016 Funding:</b>   | \$100,000  |
| <b>Project Funded:</b> | <b>Capital to finish construction and enable the opening of the pediatric wing in the main health clinic located in Mathare</b>  |
| <b>Update:</b>         | Deerfield's investment will enable the opening of the pediatric wing of the Mathare main health clinic as part of the expansion of SHOFCO's health programs in Mathare. SHOFCO anticipates registering and treating 15,000 patients at the Mathare health clinic. It is believed that the clinic will be at full capacity by year-end 2016.  |
| <b>Website:</b>        | <a href="http://www.shofco.org">www.shofco.org</a>   |



## Mifan Mama Foundation

|                       |  |
|-----------------------|--|
| <b>Mission:</b>       | Mifan Mama's mission is to offer not only life necessities to orphanages across China but also to help children to develop life skills and become independent and to live happy and fulfilled lives.   |
| <b>Partner since:</b> | 2016   |
| <b>Description:</b>   | <ul style="list-style-type: none"> <li>Mifan Mama was started by a few expat volunteers in Shanghai by providing basic food and baby formula to local orphanages, later named as "boxes of love".</li> <li>By visiting a network of orphanages in and around Shanghai, volunteers realized that local orphanage is limited in training basic life skills for vision impaired kids.</li> <li>They then built their own orphanage "Shining Star" with the goal to expand services to orphans with vision disease.</li> <li>Within "Shining Star", OT/PT programs were developed. They also work with United Family Hospital and Shanghai Children's Medical Center to bring free medical assessment and affordable eye surgeries.</li> <li>In 2014, Mifan Mama registered as a charity in Scotland following the requirement of the Scottish Charities Board.</li> <li>With the new NGO law in China, Mifan Mama is proactively seeking to register locally to ensure continuance of the program.</li> </ul> |



**2016 Funding:** \$83,000

**Project Funded:** [Eye care outreach program](#)

**Update:** Deerfield funding will support 50% of this newly designed eye care outreach program. Over the years, Mifan Mama has developed a substantial network of foster homes and orphanages where children lack access to basic healthcare. Children from these facilities and areas will be offered referrals and help with transportation and accommodations to a location where they can get the appropriate medical support. Though vision is less urgent than food, the hope is to stop blindness from happening where possible.



Mifan Mama hopes to bring the experiences they have learned over the years to more orphanages/homes surrounding Shanghai such as Jiangxi, Henan provinces, where lack of awareness in eye care was a basic need.

The program plans to screen 800 children in surrounding areas by hiring a qualified nurse, visiting sites, screening for eye infections, making referrals, and supporting needed surgeries. Currently the program budgeted 30 eye surgeries a year at an average cost of \$4,500 each.

**Website:** [www.mifanmama.com](http://www.mifanmama.com)

## La Chaîne de l'Espoir

**Mission:** La Chaîne de l'Espoir (based in France) has an operation in Cambodia – Cardiac Children's House (CCH) – that is committed to improving access to free or affordable diagnostic and treatment for underprivileged children suffering from heart disease.

**Partner since:** 2014

**Description:**

- Cardiac Children's House was opened in 2003 to fill in the large gap between healthcare service and pediatric heart disease in Cambodia.
- There is a high rate of congenital heart disease due to lack of prenatal screening and high incidence of valvular disease due to no systematic antibiotic treatment.
- 92% of patients who reside in rural areas are not able to easily commute to receive healthcare services and miss follow-ups, which leads to poor diagnosing and opportunities to treat.
- Newer equipment was installed a month after Deerfield support last year to offer higher efficiency, accuracy, lower overall cost, and training.
- La Chaîne is helping Cambodia become autonomous on the cardiac surgery level by training every link of the care chain.
- In December 2015, La Chaîne de l'Espoir had an agreement with Calmette Hospital to transfer Cardiac Children's House (CCH) completely and as a result both pre and post operation care will be streamlined within one hospital management team.



**2016 Funding:** \$75,000

**Project Funded:** [Funding an additional surgery program for 18 Tetralogy of Fallot patients](#)

**Update:** On 31st of December 2015, the Cardiac Children's House management was transferred from La Chaîne de l'Espoir to the national counterpart, the public Calmette Hospital, in order to ensure the sustainability of this cardiac pediatric unit. La Chaîne de l'Espoir will continue the technical support by sending visiting expert missions and funding external cardiac consultation and monthly surgery program.

Every month from 2016 to 2018, La Chaîne de l'Espoir will issue a grant of \$10k for cardiac consultations and \$40k for cardiac surgeries to the Calmette Hospital. Deerfield funding in 2016 will go into the surgery grant. During this transition time, La Chaîne will continue to work closely with the hospital to develop a sustain model for cardiac children care once the funding from la Chaîne will ceases in 2019. Surgeon missions to be arranged from France during this time will aim to train Cambodian surgeons at Calmette Hospital to become capable to operate complex surgeries independently. The hope is when local surgeons can operate independently they would be able to charge the wealthier population in Cambodia in order to fund the less privileged children in the region.



**Website:** [www.chainedelespoir.org](http://www.chainedelespoir.org)

## Coalition for the Homeless

**Mission:** The Coalition for the Homeless is the nation's oldest advocacy and direct service organization helping homeless men, women and children. We believe that affordable housing, sufficient food, and the chance to work for a living wage are fundamental rights in a civilized society. Since our inception in 1981, the Coalition has worked through litigation, public education and direct services to ensure that these goals are realized.

**Partner since:** 2011

**Description:**

- The Coalition for the Homeless is the nation's oldest advocacy and direct service organization helping homeless men, women and children.
- It has 11 frontline programs ranging from food service, to crisis intervention, to child advocacy.

**2016 Funding:** \$70,000

**Project Funded:** [Guide 300 Families out of Homelessness](#)

**Update:** Homelessness in NYC has reached the highest levels since the depression in 2015 and continues to hover near this level. 14,750 families and 23,000 children are currently homeless in NYC. As a result of their advocacy, the City has increased investments in anti-eviction programs, rental assistance, outreach, and permanent housing – including commitments by the Mayor and Governor to create 35,000 new units of supportive housing statewide over the next 15 years. With Deerfield Foundation's funding, Coalition for the Homeless aims to guide at least 300 families through the process reclaiming their lives.

**Website:** [www.coalitionforthehomeless.org](http://www.coalitionforthehomeless.org)

## Many Hopes

**Mission:** Many Hopes is a long-term strategic solution to the corruption and poverty that exploits the most vulnerable girls and boys. When the poorest children in the world have education and confidence and network they will be free from governments that exploit them and free to make their own choices. They will not need charity.

**Partner since:** 2015

**Description:** Founded in 2007 by British Journalist Thomas Keown and Kenyan Journalist Anthony Mulongo, Many Hopes invests in sustainable community development on five related fronts, one community at a time: girls' homes, quality school, boys' homes, medical facility and community water. They believe in starting small but thinking big. In the last seven years Many Hopes has grown to include 100 volunteers across seven U.S. and U.K. volunteer chapters. They have built their first four homes for 60 girls, purchased land and begun construction on their first school for 900 students, and raised funds for land and construction for their first four boys' homes.



**2016 Funding:** \$50,000

**Project Funded:** [Health Childhood for Girls](#)

**Update:** In 2016, Deerfield is continuing our partnership with Many Hopes with a grant of \$50,000 to provide and cover healthcare services and expenses for orphans living in the Many Hopes homes. The grant covers on-site psychological care, regular medical check-ups and disease prevention, and nutrition care for the 60 girls currently living in the orphanage. In 2015, Many Hopes provided preventative care exams and psychological support to more than 55 children, with more than 91 hours of individual counseling and 74 hours of group counseling. Deerfield provided funding for 12 of these 55 children.

**Website:** [www.manyhopes.org](http://www.manyhopes.org)



## Réseau des Entrepreneurs Solidaires

**Mission:** Fight against poverty by supporting secluded people in underdeveloped countries.

**Partner since:** 2015

**Description:**

- RES was founded in 2005, and is based on the principle of gratuity. RES builds on the local presence of 600 nuns and a priest from 42 congregations present in 10 countries.
- RES functions with volunteers only. Since no salary is paid, every dollar given to RES goes to the poor.
- The 106 RES volunteers are involved in 138 projects in 10 countries, giving access to water, education, health and nutrition.

**2016 Funding:** \$50,000

**Project Funded:** **Drug supply in 29 centers in Madagascar**

**Update:** Last year, 25 centers received drug supply that covered their need for the whole year. This year, RES will deliver drugs to 29 remote health centers and dispensaries, allowing to treat around 50,000 people, mostly children.

Deerfield's grant will be used to purchase drugs at a discounted price from Pharmacien Humanitaire International. RES will take care of the shipment of the drugs to Madagascar. In Madagascar, the local brewery Brasserie Star agreed to deliver the drugs for free anywhere in the country. Drugs are received by the sisters who head the health center. Sister nurses are in charge with diagnosing the patients, delivering the drugs, and following up to make sure each patient takes their treatment.



**Website:** [www.entrepreneurs-solidaires.ch](http://www.entrepreneurs-solidaires.ch)

## Village Health Works

**Mission:** Village Health Works seeks to provide quality, compassionate health care in a dignified environment while also treating the root causes and social determinants of illness, disease, violence, and neglect. They do so in collaboration with those they serve and partners who share their beliefs.

**Partner since:** 2015

**Description:**

- Village Health Works focuses first on treating illness through primary health care services, then uses its community engagement to expand that care with community development programs focused on sustainable agriculture, education, and gender-based violence prevention.
- Since 2007, they have held more than 92,000 patient consultations; they see approximately 170 patients per day, in addition to inpatients in their 40-bed wards.
- Their dedicated clinical team, community health workers, and birth monitors also provide invaluable follow-up and wider community health advocacy efforts.

**2016 Funding:** \$50,000

**Project Funded:** **Medicine and Medical Supplies (50% of Annual Purchase)**

**Update:**

- In 2015, 1,069 patients screened for malnutrition – equivalent to 16 % of total patients under 15 years (6,609) – out of which 781 cases were detected for kids under 5. The goal for 2016 is to continue to see less than 25% of total patients (<15 years) diagnosed with malnutrition.
- In 2015, 270 women opted for VHW's family planning methods – a 13% increase over 2014. 207 used DMPA, 23 took oral pills, 29 chose implants, and 11 used IUDs. 103,381 condoms were also distributed. The goal for 2016 will be to increase the number of patients that opt for a type of family planning by 5%.
- In 2015, 2,367 patients were dewormed. In 2016, VHW hopes to increase this by 5%.
- In 2015, 4,603 patients were tested for HIV in 2015, which is equivalent to a 45% increase (114 patients newly tested as HIV positive and receiving treatment). The goal for 2016 is now to increase the number of tests by 5%, with 0% for mother to child transmission.



**Website:** [www.villagehealthworks.org](http://www.villagehealthworks.org)

## IVUmed

**Mission:** IVUmed is committed to making quality urological care available to people worldwide. In fulfilling this mission, IVUmed provides medical and surgical education to physicians and nurses and treatment to thousands of children and adults.

**Partner since:** 2012

**Description:** For over 20 years, IVUmed has worked to increase access to quality urological care worldwide. IVUmed provides hand-on surgical training, classroom instruction, and remote telehealth consultation to provide urological and surgical care services to resource-poor areas in the world. Their programs address conditions that are startlingly common but often left untreated due to the lack of expert training. By working in teaching hospitals in collaboration with international medical associations, programs are built to be sustainable for generations of healthcare providers.



**2016 Funding:** \$50,000

**Project Funded:** **Urological Surgery Education and Training**

**Update:** In 2016, Deerfield granted \$50,000 to help support urological expert training programs with the goal of building a sustainable surgical teaching program within 5 years. The teaching program consists of hands-on training and workshops at established training sites. Children will be treated directly for common urological defects, with our funding providing a total of 39 operative cases. IVUmed also assists in the payment of surgical fees, lecture fees, and the purchase of surgical equipment.



**Website:** [www.ivumed.org](http://www.ivumed.org)

## Medic Mobile

**Mission:** Medic Mobile takes advantage of the near-ubiquitous cellular phones in the developing world as a platform to deliver software that enhances coordination, efficiency, monitoring, and optimization of healthcare interventions provided by other NGOs. In this way, Medic Mobile amplifies the impact of its partner groups that provide healthcare in under-resourced communities around the world.

**Partner since:** 2016

**Description:**

- Founded in 2010, Medic Mobile has supported its partners by delivering mobile tools now used by 11,000 community health workers in 23 countries and impacting 8 million people.
- Medic Mobile's software toolkit can be applied to basic cellphones as well as smartphones and computers, and can work with internet connectivity or over SMS messaging systems.
- Field data to date, including peer reviewed publication, demonstrates Medic Mobile's capacity to save thousands of hours of worker transit time and thousands of dollars in costs, while increasing efficiency of care delivery.

**2016 Funding:** \$50,000

**Project Funded:** [Under 5-year-old health app](#)

**Update:** Medic Mobile is working with another of Deerfield's partner organizations, Muso, to develop an app specifically geared toward improving early childhood health. In 2016, Deerfield granted \$50,000 to help support the planned two-year development program of this app. The app will enable the 360 Muso community health workers involved in this pilot phase to collect data with increased efficiency via smartphones, rather than by the current paper forms. In addition, the app will enable more rapid monitoring of worker performance and impact, as well as quicker modifications of their activities to optimize benefit to the community. By the end of 2016, the app is expected to have been deployed at Muso's three current operational sites, with data collection and refinement to follow in 2017. We expect that Medic Mobile's efforts will enable Muso to increase the number of patients receiving necessary treatments and referrals in a timely manner, while reducing protocol errors.



**Website:** [www.medicmobile.org](http://www.medicmobile.org)

## St. Boniface

**Mission:** The St. Boniface Haiti Foundation is dedicated to providing essential health services to the people of Southern Haiti, especially the most vulnerable. We are committed to building a comprehensive, efficient, and resilient health system that provides high quality care. We believe that ensuring access to life-saving and life-changing health services is a critical component to building strong and productive communities.

**Partner since:** 2016

**Description:**

- Haiti lags in almost every key pediatric health indicator, with the highest infant mortality rate, the highest under-five mortality rate, and the highest prevalence of undernourishment in the Western Hemisphere.

- In 2015, SBHF provided over 12,000 consultations for children under 14.
- They are currently in the midst of a drought, which according to USAID's Famine Early Warning System Network, puts the region at crisis level.
- St. Boniface Hospital is southern Haiti's only affordable, reliable, and comprehensive surgical program, in which over 130 surgeries are performed each month (one fifth pediatric)



**2016 Funding:** \$50,000

**Project Funded:** **Pediatric surgical and hospital supplies to support pediatric services at St. Boniface Hospital (in Fond-des-Blancs) and the Villa Clinic**

**Update:** With Deerfield Foundation's funding, St. Boniface expects it will:

- Increase the number of pediatric patient visits at St. Boniface Hospital and the Villa Clinic with high quality care by 10% over one year from 12,213 to 13,434
- Increase the number of pediatric malnutrition screenings at St. Boniface Hospital, the Villa Clinic, and at the community-level by 5% over one year from 13,886 to 14,275. It will also:
- Ensure that all necessary medicines and medical supplies are in stock and available for children's health services.
- St. Boniface Hospital is southern Haiti's only affordable, reliable, and comprehensive surgical program, in which over 130 surgeries are performed each month (one fifth pediatric)



**Website:** [www.haitihealth.org](http://www.haitihealth.org)

## Terre des Hommes

**Mission:** Improve living conditions of the most vulnerable children in a concrete and sustainable manner. Work to enable children to grow up and develop in a safe environment.

**Partner since:** 2015

**Description:**

- Terre des Hommes (TdH) was founded in 1960 by Edmond Kaiser. He was shocked by the conditions children lived in during the war in Algeria. His mission was to save children, either in their hometown, or to bring them to Switzerland for treatment.
- Works on two levels to help children: 1) providing direct aid worldwide for children in need, and 2) serves as an ambassador for children's rights in Switzerland and throughout the world, through campaigns that promote the fundamental rights of children or that denounce violation of these rights.
- TdH boosts healthcare systems, combats malnutrition, monitors pregnant women and nursing mothers, and improves access to water and hygiene. They also offer children suffering from illnesses that are incurable in their own countries the opportunity to have surgeries and treatment in Switzerland.
- In 2013, they were present in 36 countries, and ran 103 projects aiming at improving living conditions among the most vulnerable children.



**2016 Funding:** \$48,500

**Project Funded:** [Improve access to health and quality of care for children and mothers in Mauritania](#)

**Update:** In partnership with the Ministry of Health and the various health professionals in the target area, the aim of the project is to improve the quality of health services for infants and children up to 5 years old as well as pregnant and lactating women in 10 centers.

Deerfield's grant will be used to cover hospitalization costs for the poorest patients, train local staff, and purchase medical materials. This is the second year for this 3-year project, with a total budget of \$301k for 2016

Achievement during the first year of the project (2015) are:

- 22,335 children were diagnosed and treated for various infections (dengue, malaria, measles, etc.)
- 2,586 children were diagnosed with malnutrition
- 17,556 pregnant or lactating mothers were trained on hygiene, breastfeeding and nutrition
- 14,496 pregnant women accessed prenatal care
- 7,669 newborn babies accessed greater clinical care, such as better umbilical cord cutting, preliminary ophthalmic tests, administration of vitamin K
- 4,950 women attended family planning trainings



**Website:** [www.tdh.ch](http://www.tdh.ch)

## Harlem Health Promotion Center

**Mission:** The Harlem Health Promotion Center's (HHPC) mission is to use community partnerships, health training, program evaluation, information technology, and infrastructure to improve the health and well-being of the Harlem community, and effectively communicate and disseminate public health practices to Harlem's residents.

**Partner since:** 2014

**Description:**

- HHPC uses its resources to provide high-quality prevention research aimed at implementing and evaluating sustainable, effective, community-based strategies that address health disparities and priorities in the Harlem and Upper Manhattan communities.
- HHPC's direct service arm uses trained health educators to provide outreach, education, counseling, and screening in community settings.
- HHPC provides medical and psychological services for young people ages 13 to 24 living with HIV as well as those at high risk for HIV and sexually transmitted infections.
- HHPC uses online platforms to teach consumers about chronic disease and general wellness issues.
- HHPC is under the administration of the Department of Sociomedical Sciences in the Mailman School of Public Health at Columbia University.

**2016 Funding:** \$28,500

**Project Funded:** [Continued funding of a part-time health educator and project coordinator for the Youth Access Program.](#)

**Update:** Since the summer of 2015 Project Stay, has identified several new partners, including the Center for Employment Opportunities, New Alternative for Homeless LGBT Youth, Argus Community House, Cascades and Manhattan Alternate Learning Center, and Bronx Community College, among others. These have allowed it to expand the care the organization it is able to deliver.

Project STAY has been able to recruit six student volunteers from Columbia University's School of Nursing and five from Columbia University's Mailman School of Public Health to assist in delivering community health-education workshops, conducting outreach, screening and linkage to care.

Through these efforts Project Stay increased their number of network partners from 8 to 15; provided workshops for 1,925 youth; and conducted 1,020 health assessments.

**Website:** [www.mailman.columbia.edu/academic-departments/centers/harlem-health-promotion-center](http://www.mailman.columbia.edu/academic-departments/centers/harlem-health-promotion-center)

---

## Maternal and Child Health Catalyst Program at SUNY Albany

**Mission:** The U.S. government's Maternal and Child Health Catalyst program seeks to increase focus on MCH content at schools of public health without a current MCH concentrations, and to expose increased numbers of students to MCH materials and careers in the MCH field. In 2015, SUNY Albany was one of five universities nationally to receive a competitive, 5-year, \$350,000 government grant to develop an MCH program.

**Partner since:** 2016

**Description:**

- SUNY Albany's MCH program is explicitly committed to increasing the number, competency, and diversity of MCH workers, with a focus on improving maternal and child health in underserved populations of New York.
- Albany's program focuses on outreach and engagement of new students, especially those of a disadvantaged and underrepresented background; expanded MCH coursework offerings; placement of students in internships to gain work experience; and mentoring and professional support.

**2016 Funding:** \$5,000

**Project Funded:** [Travel internships for MCH students to NYC hospitals](#)

**Update:** Maternal and Child Health workers are in short supply that will soon shrink: 25% of the aging profession expects to retire by 2020. Meanwhile, infant mortality in certain populations of New York state parallels that found in the developing world. SUNY Albany's MCH Catalyst program seeks to address this need through increased academic focus and student outreach to prepare more students for a career in the MCH field. In 2016, Deerfield Foundation granted \$5,000 to support summer travel internships for MCH program students to come to New York City area hospitals in need, benefiting both our local patient populations, as well as providing valuable work experience for the students. We expect the first student to arrive in New York in summer 2017, and hope to expand the program's scope over the coming years in partnership with SUNY Albany

**Website:** [www.albany.edu/sph](http://www.albany.edu/sph)

**2016 Investment Breakdown**

|   |                    |
|---|--------------------|
| Children's Health Fund                                    | \$675,000          |
| Possible Health   | \$600,000          |
| The Water Trust   | \$300,000          |
| Partners in Health  | \$200,000          |
| Little Sisters of the Assumption                          | \$180,000          |
| Covenant House NYC  | \$160,000          |
| Northside Center for Child Development                    | \$150,000          |
| New York Foundling (Haven Academy)                        | \$125,000          |
| Health Builders   | \$100,000          |
| The Family Center   | \$100,000          |
| Last Mile Health  | \$100,000          |
| Muso  | \$100,000          |
| Shining Hope For Communities                              | \$100,000          |
| Mifan Mama Foundation                                     | \$83,000           |
| La Chaîne de L'Espoir                                     | \$75,000           |
| Coalition for the Homeless                                | \$70,000           |
| Many Hopes  | \$50,000           |
| RES   | \$50,000           |
| Village Health Works                                      | \$50,000           |
| IVUmed  | \$50,000           |
| Medic Mobile  | \$50,000           |
| St. Boniface  | \$50,000           |
| Terre des Hommes  | \$48,500           |
| Harlem Health Promotion Center                            | \$28,500           |
| Maternal and Child Health Catalyst Program at SUNY Albany | \$5,000            |
| <b>Total Investment</b>                                   | <b>\$3,500,000</b> |

---

## Contact Information

### Deerfield Foundation

780 Third Avenue  
37th Floor  
New York, New York 10017

Phone: 212-551-1600  
E-Mail: [df@deerfield.com](mailto:df@deerfield.com)

### 2015-2016 Executive Committee Members:

Terence Karnal, President Emeritus  
Sumner Anderson, President  
Karen Heidelberger, VP  
Gilan Megeed, VP  
Nick Bishop, VP  
Céline Audibert, VP  
Lawrence Atinsky, VP  
Cecile Jia Hu, VP  
Bryan Sendrowski, Treasurer  
Susan Polanco-Briceno, Secretary  
Charlotte Williamson, Assistant Secretary