

Contents

Children's Health Fund.....1	The Family Center.....9	Many Hopes.....16
Partners in Health.....2	Northside Center for Child Development 10	Réseau des Entrepreneurs Solidaires.....17
Possible Health.....3	Last Mile Health.....11	Terre des Hommes.....18
Health Builders.....4	La Chaine de l'Espoir.....12	Village Health Works.....19
Little Sisters of the Assumption.....5	Muso.....13	Harlem Health Promotion Center.....20
The Water Trust.....6	Shining Hope For Communities.....14	2015 Investment Breakdown.....21
Covenant House.....7	Shanghai Soong Ching Ling Foundation... 14	Contact Information.....22
NY Foundling (Haven Academy).....8	Coalition for the Homeless.....15	

The Foundation has formed 32 partnerships and has invested over \$18 million for the advancement of children's health in its nine years. From health clinics in Nepal to a mobile medical home for children in the South Bronx, this newsletter highlights the impact that the Foundation's efforts have had on children's lives.

Children's Health Fund

Mission:	CHF is committed to providing health care to the nation's most medically underserved children through the development and support of innovative, comprehensive primary care programs, reducing the impact of public health crises on vulnerable children, and promoting the health and well-being of all children.
Partner since:	2007
Description:	<ul style="list-style-type: none"> • Launched in 1987, the program was started with a single mobile medical clinic to bring care directly to children in homeless shelters in NYC. • Today, through a national network, CHF provides care for 350,000 children in disadvantaged rural and urban communities through 50 mobile medical clinics and 301 medical service sites. • Its Flagship Program in NYC serves Harlem, South Bronx, and the NYC homeless population.
2015 Funding:	\$800,000
Project Funded:	Deerfield Child and Family Health Clinic
Update:	One in five visits at the Deerfield Clinic is by an uninsured patient, who is often undocumented and ineligible for Medicare/Medicaid. Deerfield's grant of \$350,000 covers the funding gap in the clinic, enhancing services and health care access for homeless children. From January to September 2015, 1,093 patients were able to get comprehensive services.
Project Funded:	Expanding the Deerfield Clinic & Family Health Clinic
Update:	Deerfield's grant of \$100,000 doubled the clinic exam rooms available, keeping pace with increasing demand for their services.
Project Funded:	New York Flagship Program
Update:	Deerfield granted \$350,000 to the NY Flagship Program to help fully fund all healthcare visits from NY Children's Health Project and South Bronx Health Center. From January to September 2015, the program conducted 47,440 health care visits for 9,607 individuals, 57% being children under the age of 20.
Website:	www.childrenshealthfund.org



Partners in Health

Mission: Partners In Health (PIH) proves it is possible to provide high-quality healthcare in even the poorest corners of the world. Partnering with sister organizations, PIH has two overarching goals: to bring the benefits of modern medicine to those most in need, and to serve as an antidote to despair.

Partner since: 2008

Description:

- Since its founding in 1987, PIH has been relentlessly committed to improving the health of the poor and marginalized.
- PIH partners with sister academic, medical, charitable and government organizations to deliver innovative, scalable, sustainable solutions to the world's most intractable health problems.
- Currently operating in eight geographies around the world, PIH is bringing quality care to a service area of 2.47 million people worldwide.

2015 Funding: \$500,000

Project Funded: [Dambe Health Center, Malawi](#)

Update: In the remote Neno district of Malawi, residents have not had access to routine medical care since unaffordable user fees were adopted at the only local clinics. Therefore, in 2014, Deerfield granted \$300,000 to finance construction of the Dambe Health Center, which will provide free primary care to the estimated 20,000 area children. Construction of the clinic is complete, and ancillary structures (staff housing) nearly so; Dambe Health Center will officially open for services in January 2016. Deerfield further granted \$300,000 in 2015 to fund initial supplying and staffing of the facility as final agreement is reached on matters of ongoing funding from the Malawi Ministry of Health. Dambe is expected to provide approximately 750 pediatric visits for children under five as well as 1,700 adolescent and adult visits each month.



Community Programs Manager Sam Njolomole with local residents at a community mobilization event in Dambe.



Lead Clinical Officer, Atupere Phiri, takes notes as Nurse Judith Kanyema measures a hypertensive patient's blood pressure

Project Funded: [Zanmi Beni Home, Haiti](#)

Update: Zanmi Beni was established as a home for 64 disabled orphans who had previously been cared for in a hospital that was destroyed in Haiti's 2010 earthquake. Zanmi Beni provides for the medical, developmental and educational needs of these children in a safe and supportive environment. In 2015, Deerfield granted \$200,000 toward the operating budget of Zanmi Beni and is the only dedicated source of funding. Deerfield's grant supports 38 children's school attendance, 5 children's private tutoring, and 30 children's physical therapy sessions three times a week. Because some of these children will require sustainable life-long support, Zanmi Beni has launched income generating ventures, including a bakery, a

chicken coop, a restaurant and a fish farm. The fish farm is now the most sophisticated such operation in Haiti, and generates \$550 - \$700 in profits per month.



Gisele has both physical and verbal limitations, so is home schooled. She loves to "hip-hop" dance and likes to have fun with her brothers and sisters and visitors to Zanmi Beni.

Website: www.pih.org

Possible Health

- Mission:** To realize the right to health by delivering transparent, data-driven healthcare for Nepal's rural poor.
- Partner since:** 2012
- Description:** Possible is a nonprofit healthcare company that delivers high-quality, low-cost healthcare to the poor.
- 2015 Funding:** \$400,000
- Project Funded:** [One year commitment to the Proof Fund that is being raised to roll out the Possible Health system to the entire Achham District in Far-Western Nepal](#)
- Update:** What an update for Possible since our last newsletter! There have been two key issues that have effected it, and have catalyzed the organization for growth for the foreseeable future. Given the magnitude of skills that the leadership of the organization has shown, we believe this is a tremendous time for them.



Firstly, Possible was impacted directly by the earthquake that hit near Kathmandu. Not only was it felt 250 kilometers away in its headquarters, but it caused damage in Dolakha District and 40% of the population of 186,000 lost all access to healthcare overnight. True to its mission of delivering high-quality, low-cost healthcare to the world's poor, Possible decided to use its best practices to focus on this region as a second district. It will use the same metrics of success in the new region as in Achham. Secondly, Possible has also been impacted by a blockade that has been in place along the Indian border. This has made it impossible to move building supplies into the country. Despite this, Possible was able to break ground in the earthquake-impacted region and nearly finished phase 1 of the hospital housing expansion in Achham.

Possible is still continuing its development of the Achham District but has delayed the fundraise of the Proof Fund that was focused only on this district. So far they are seeing outstanding results with 100% surgical access for patients that need it, 76% of women giving birth in a healthcare facility with access to a trained clinician, and marginalized patients accessing its hospital 50% more frequently than non-marginalized patients. Possible

also cared for its 300,000th patient and hired its 300th employee. Congratulations Possible!

Website: www.possiblehealth.org

Health Builders

Mission: Health Builders believes that every individual should have access to a local health center that is properly managed and delivers the highest quality of care - even in the places that are hardest to reach.

Partner since: 2014 as Health Builders, and since 2012 as Rwanda Works

Description:

- Health Builders applies management principles to health centers so that health workers have the facilities, tools, and medicine they need to save lives. These principles are applied in partnership with the Rwandan government both in existing health centers as well as through the new infrastructure built by Health Builders.
- Health Builders provides health centers with hands-on technical assistance in the following areas: HR, Infrastructure, Financial Management, Health Insurance, Pharmacy Logistics, Data Management, Planning and Coordination, and Information Technology. When health centers are able to function well on their own, Health Builders leaves.
- To date, Health Builders built five state-of-the-art health centers and one maternity ward.
- Kintobo is the only sector without its own health center. Approximately 20,000 individuals who live there travel at least two hours by foot up and down rough terrain - often while very sick or pregnant - to receive primary health care services.

2015 Funding: \$200,000

Project Funded: [Build a Health Center in Kintobo](#)

Update: The total cost for the building of the Kintobo Health Center is \$1,090,000 and is funded as follows: Deerfield Foundation = \$400,000; Pace Family Fund = \$450,000; Meyer Foundation = \$100,000; Rwanda government = \$140,000.

The construction of the health center is advancing well and is on-schedule for the launch celebration on February 3, 2016.

In September, plumbing installations started as well as building the foundations for the house guard,

Maternity Ward

and extraction of two septic tanks.

Construction slowed down in September due to design plans having not been executed correctly.

Corrections had to be made on a few items, and by end of September most major challenges had been addressed.

In October, roof structures on Maternity and Outpatient blocks were fixed, window prototypes were prepared, and cement layers started to be poured. As of November 4th, 95% of foundations and elevations were completed, 40% of the roof structures were in place, 25% of plumbing and steel frames were completed, as were 20% of electrical.

Website: www.globalhealthbuilders.org

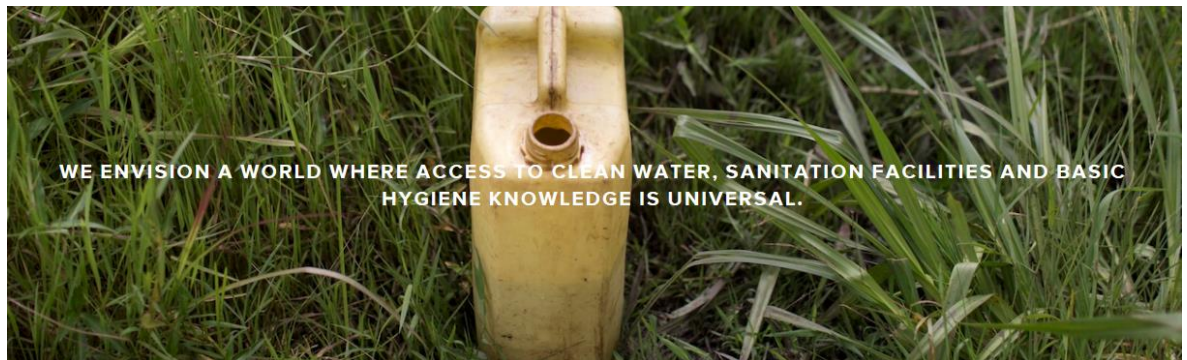


Little Sisters of the Assumption

Mission:	The Little Sisters of the Assumption Family Health Service (LSA) is a neighborhood-based organization founded in 1958 that works with the people of East Harlem (New York) to address the physical, emotional, educational, and spiritual dimensions of family health. LSA's home-based and center-based programs are designed to empower those who are most vulnerable and who have least access to the basic necessities of life, in the conviction that the entire community grows when individuals and families are affirmed in their own dignity.
Partner since:	2008
Description:	<ul style="list-style-type: none"> • The reason for LSA's special commitment to the residents in East Harlem / El Barrio is simple: they need our help. • East Harlem / El Barrio remain home to more underserved and poor residents than anywhere in Manhattan. • Over 70% of children are born into poverty and they face the worst risks to their health / wellbeing relative to children living almost anywhere else in NYC. • Over 40% of El Barrio residents live below the poverty line, and 26% have no health insurance. • The Infant Mortality Rate is 7.6 per 1000 births (4.8 Hispanics, 8.6 for Blacks). • Asthma hospitalizations for children less than 15 years old is 10 to 12%
2015 Funding:	\$180,000
Project Funded:	The Family Asthma Program
Update:	<p>LSA's Environmental Health and Family Asthma Program were established in 1997 in response to the high rate of asthma among children in East Harlem. LSA's 12-month program helps reduce missed school and work days, as well as emergency room and hospital visits for those with asthma. LSA's home-visiting community health workers work hands-on to help families modify housing conditions and household living habits in order to improve indoor air quality, asthma symptoms, and overall health and wellbeing. To date:</p> <ul style="list-style-type: none"> • 70% of families in this program had no cockroaches / reduced presence of cockroaches in the home. • 60% of families had no mold in the house or reduced the amount of visible mold. • 70% of the apartments had less or no mold thanks to the involvement of the building's owner. • 67% of school children experienced fewer / no school days missed. • 80% of children had fewer urgent care visits / no urgent care visits, and 81% children had fewer ER visits / no visits
Project Funded:	Maternity Outreach Program
Update:	<p>LSA's Maternity Outreach Program seeks to ensure quality prenatal, post-partum and infant care to poor and immigrant families in East Harlem, and to reduce the high infant mortality rate. This Program provides medical care, education about fetal development and physical changes of pregnancy, nutrition for healthy development, parenting techniques, and the promotion of social connections to relieve social isolation, among others. To date:</p> <ul style="list-style-type: none"> • 77% (33 of 43 babies) weighed six pounds or more at birth • 86% (37 of 43) were born no sooner than 37 weeks • 92% (75 of 79) infants attained appropriate developmental milestones as evidenced by initial, mid service and discharge Newborn Behavior Observation results • 90% demonstrated an increase in knowledge and skills in infant care and development and parent-child bonding • 86% of pregnant women demonstrated an increase in knowledge and skills in prenatal nutrition, prenatal vitamins, exercise, substance / alcohol abuse, smoking cessation and use of OTC medications (43 out of 50)
Website:	www.littlesistersfamily.org

The Water Trust

- Mission:** The Water Trust (TWT) is a non-profit that teams with communities in East Africa to develop and implement sustainable access to clean water, improve sanitation and promote hygiene knowledge.
- Partner since:** 2008
- Description:**
- 780 million people lack access to clean water and nearly 3 billion do not have access to proper sanitation.
 - 1 in 5 deaths of children under five are related to unclean water and poor sanitation.
 - 45% of Ugandan's rural citizens lack access to improved water sources.
 - TWT partners with villages, schools and health centers in Uganda's Masindi and Kiryandongo regions to implement water and sanitation programs, build wells and latrines and promote hygiene knowledge to fight disease.
 - Since 2008, Deerfield has funded 70 water, sanitation and hygiene projects with a hand dug well in villages and four in schools, benefitting approximately 21,000 people in East Africa.



- 2015 Funding:** \$180,000
- Project Funded:** The completion of 10 shallow hand dug wells, 5 school sanitation projects, the purchase of a new vehicle, training activities, well improvements and headquarters support
- Update:**
- Completed 7 of 10 shallow hand-dug wells bringing clean water and complementary software programs (sanitation, hygiene, management and monitoring) to 1,120 people to date.
 - Installed 4 latrine stances in schools with the goal of completing 10 for the year. All latrines will be installed by early 2016.
 - Purchased a new motorbike to support the expanding monitoring and evaluation system.
 - Continued to collect data and to find community-driven solutions to remediate contaminated wells.
- Website:** www.watertrust.org



Covenant House

Mission: Covenant House’s mission is “...to serve suffering children of the street and to protect and safeguard all children” with absolute respect and unconditional love. Founded in 1972 with this simple, profound mission to help homeless kids escape the streets, today Covenant House is the largest charity in the Americas providing shelter and essential services to homeless, abandoned, abused, trafficked and exploited youth, serving more than 56,000 homeless youth annually in 27 cities throughout the United States, Canada and Central America.

Partner since: 2012

Description: Covenant House services include street outreach, emergency shelter, medical and mental health care, Mother and Child residential programs, workforce development and educational programs, legal advocacy, Rites of Passage transitional living programs, and long-term permanent housing support.

2015 Funding: \$150,000

Project Funded: **Funding of a psychiatric nurse practitioner and an OB/GYN medical doctor**

Update: Deerfield’s funding of a psychiatric nurse practitioner helps provide the specialized trauma-informed counseling, mental health services, and a path to safe housing homeless youth need. The OB/GYN medical doctor provides critically important high quality health care that can literally be a life saver for young women, and often their children, many who have never seen a doctor, may have been forced to leave home because they are pregnant, may have an STD and not know it, or may not fully realize how at risk they are for HIV.

“Today, I’m able to say that my idea of change is becoming more so a reality. I have housing appointments, and have applied for benefits. I’ve been employed. Today I remain sober and found better ways of coping with some of life changes. My time here in Covenant House is almost up, but I’m no longer in the frame of mind that I was in before.” Client of Psychiatric program, Covenant House New York

In the 4 months July 1, 2015 – October 31, 2015:

- 77 youth were screened by the mental health program.
- 30 were diagnosed with severe and persistent mental illness (most often major depressive disorder, major depressive disorder with psychotic features, and post traumatic disorder).
- 9 youth were successfully placed in supportive housing, with an additional 21 youth currently on waiting lists.
- 129 were referred to other programs for counseling and housing assistance, including Covenant House’s own transitional living program, Rites of Passage, as well as other independent living programs or permanent housing.
- 78 patients were screened and tested for obstetrics and gynecological care.
- 22 pregnant young women were referred to neighborhood hospitals (Roosevelt, Weill Cornell and St. Luke’s) for continued pre natal care and delivery and dating/anatomy. Dr. Ko also performed 23 limited pelvic ultrasounds for pregnancy or a gynecological issue.
- Dr. Ko provided ongoing training, gynecological care and counseling for over 75 young women grappling with issues related to their high-risk sexual histories and behavior, primarily to help raise awareness about HIV/AIDS treatment and prevention. In addition she participated and collaborated in trauma-informed care training of staff at CHNY, a nationally recognized expert in fostering resilience in teenagers.



The magic of Christmas came to CHNY when the gym was transformed into the North Pole!

Website: www.covenanthouse.org/

NY Foundling (Haven Academy)

Mission:	Haven Academy Charter School in partnership with the NY Foundling was designed to meet the needs of at-risk students who are currently in foster care and/or receiving preventative services through the child welfare system. By designing a school that addresses the barriers children in the child welfare system face by providing a full range of family support services, children will be better prepared to achieve success in school. By providing greater integration between the education and child welfare systems, the specific demands of the child welfare system on families and students are more efficiently managed to reduce negative consequences for a child's development.
Partner since:	2008
Description:	<p>The entire design of Haven Academy was intentionally planned to address the needs exhibited by students with a history of child welfare involvement. Specifically, it:</p> <ul style="list-style-type: none"> • Facilitates integration of education and welfare systems to reduce demands on families and children; • Provides educational and social services professionals to children and families; • Provides comprehensive health care with an on-staff pediatric nurse practitioner; and • Provides comprehensive mental health services.
2015 Funding:	\$150,000
Project Funded:	Funding of Pediatric Nurse Practitioner
Update:	Haven Academy's Pediatric Nurse Practitioner (PNP), Joyce Lee, provides primary medical care to all Haven Academy students who do not have a centralized medical home, in addition to in-school care far above and beyond the expectations of a standard school nurse. In just the first two months of the school year, the Nurse's office has received 1,329 visits from children for a wide range of reasons. A BMI assessment was completed for all Haven Academy scholars from pre-k to 5th grade. She provided coaching to students and families on various issues, including nutrition, weight loss, and healthy eating habits. She identified all families without a medical home and is working with them to resolve insurance issues or other barriers preventing them from receiving treatment.
Project Funded:	83% of Mott Haven Academy Prevention Outreach Worker
Update:	<p>Haven Academy's Outreach Coordinator, Annemarie Garcia, ensures that young scholars remain connected and engaged with the school, even during the times of transition and crises that are all too common among youth who are involved with the child welfare system. This year, 100% of students and/or families that were in transition or crisis were offered additional support services. Just during the first two months of the school year, nine referrals to mental health services were made. A discharge follow-up among all graduated or discharged students revealed that 100% of students felt that Haven Academy prepared them for Middle School, and 98% reported that they entered Middle School adequately prepared for the experience.</p> <p>There has also been an improvement in attendance vs this time last year, with some who were previously chronically absent now decreasing absent days by 50% in just the first two months of the school year.</p>
Website:	www.havenacademy.org www.nyfoundling.org



The Family Center

Mission:	The Family Center works to strengthen families affected by illness, crisis, or loss to create a more secure present and future for their children.
Partner since:	2008
Description:	<ul style="list-style-type: none"> • The Family Center provides expert social and legal services, including healthcare coordination, to vulnerable New York families confronting a crisis or loss. • Families that receive care either have a parent that is seriously ill, lost a parent, are headed by grandparents, relatives or friends because the parent is ill or absent, or are facing crisis such as abuse or truancy. • The services provided are coordinated to promote long-term family stability, are regularly evaluated to ensure effectiveness, are individually tailored with an emphasis on home visits, and are confidential and offered at no cost to the family. • The Family Center works with the families every step of the way as they confront crisis or loss and builds trust and achieves sustainable results.
2015 Funding:	\$125,000
Project Funded:	Building Bridges for Children
Update:	<p>The Foundation agreed to continue funding for Building Bridges for Children, which addresses both the immediate and long-term inter-generational challenges faced by vulnerable children exposed to HIV and/or who are struggling with a mental health challenge. This covered approximately 80 children and their families – or approximately 1,600 sessions. So far, The Family Center has already provided expert, comprehensive services to 61 children. 33 of these children were affected by HIV; the vast majority of them who were exposed to HIV in-utero. While they were all born HIV-negative, the retroviral medications that prevent mother-to-fetus transmission can have a lasting, negative impact on a child's development history. Through The Family Center early childhood program (Early Support for Lifelong Success or ESLS), children and their families work with Bachelor's-level early childhood specialists who take a professional structured approach to assessing the child's current physical, cognitive and emotional development. When deficits are identified, they intervene to address short-and long-term consequences. The remaining 28 of these children have been diagnosed with a mental illness which includes depression, anxiety, suicidal ideation and other symptoms caused by exposure to severe trauma. Through its mental health services, children and their families receive counseling and support from Master's-level professionals, who deliver highly-tailored therapeutic services, which are more broadly construed than the evidence-based tools of ESLS, and more flexible in addressing issues particular to individual families. These often include negative coping patterns that have a propensity to become cyclical over generations. Just as physical, emotional and language delays left unaddressed can have severely negative ramifications for a child's prospects of maturing into a healthy adult, so can a challenging family. ESLS screens and assesses for the former, while the Institute addresses family interactions and other essential components of the child's emotional and social growth.</p>
Website:	www.thefamilycenter.org

Northside Center for Child Development

Mission: Founded in 1946, Northside Center provides children and families the support they need to overcome adversity and thrive. Northside's high quality outcome-driven behavioral, mental health and education services propel struggling children forward, away from the ill-effects of poverty and racism; toward a future limited only by the scope of their dreams.

Partner since: 2015

Description:

- Northside's programs operate out of five locations around New York City in Harlem, Brooklyn and the Bronx.
- Northside's programs fall into three main categories: Mental/Behavioral Health, Early Education and Enrichment for children of all ages and their families, and some adults.
- Northside's clinics provide youth and their families with psychiatric, psychopharmacological, and psychotherapy services. Additionally, Northside operates clinics in several schools around New York City that provide mental health treatment during school hours to children who struggle with emotional, behavioral and learning challenges.
- Northside's Early Education Services serve families with children ages zero to eight at their homes, Northside's facilities and at partner organizations within the community. Additionally Northside provides Preschool and School Age Special Education Programs in small classroom environments to children who have been diagnosed with emotional difficulties, behavioral problems, development delays, language disorders, learning disabilities, and/or mild neurological impairment through its Northside Day School Program.
- Northside's enrichment programs offer one on one remedial tutoring, recreational and therapeutic after school programs and summer day camp.



2015 Funding: \$125,000

Project Funded: [The hiring of a medical facilitator in order that Northside can begin to establish an integrated health care model that marries both mental and physical health for the improved wellbeing of their clients.](#)

Update:

- In July 2015, Northside hired a medical facilitator (Registered Nurse).
- Through November, the medical facilitator has conducted a total of 163 visits in Northside's clinic.
- The medical facilitator has served 319 children and pregnant mothers at Northside's Head Start Programs.
- Additionally, the medical facilitator has conducted home and center based parent workshops, coordinated Early Head Start and Head Start nutrition policies and procedures and has networked in each service areas' community to develop health and nutrition collaborations.

Website: www.northsidecenter.org

Last Mile Health

Mission: Last Mile Health, known in Liberia as Tiya Health, seeks to save the lives of women and children in Liberia's most remote villages by improving community healthcare and removing critical barriers to healthcare access.

Partner since: 2014

Description:

- Since 2007 Last Mile Health (LMH) has pioneered a model Frontline Health Worker (FHW) system that is redefining rural healthcare delivery, deploying over 125 frontline health workers in Liberia in partnership with the Liberian Ministry of Health and Social Welfare.
- LMH transforms local community health workers (CHW) into medical professionals that fight diseases such as diarrhea, pneumonia, malaria - the three highest risks to children in rural Liberia - and provide maternal care.
- FHW delivers basic care and target over 75% of the disease burden that kills rural women and children.



2015 Funding: \$100,000

Project Funded: To develop staff capacity both for CHW supervisors in Rivercess County, and for members of the County Health Teams (CHTs) in Grand Gedeh and Rivercess Counties to support child health services in the immediate term and to sustain child health services over the long term.

Update: In the last three months, LMH has more than doubled the number of CHWs the organization employs, expanding lifesaving health services to three of the six health districts in Rivercess County. As of November, LMH has recruited 120 new CHWs to serve all of the communities in Yarnee, Central C, and Jowee districts that lie more than five kilometers from the nearest health facility. These CHWs will serve over 3,000 children under five in their catchment areas. These enthusiastic new recruits join the ranks of the 71 CHWs that are already working under the coordination of Last Mile Health in Konobo and Gboe districts in neighboring Grand Gedeh County, bringing the total number of CHWs across Last Mile Health's program sites to 190.

LMH's CHWs were trained in LMH's first CHW module, Community Engagement & Surveillance, which involves community mapping, household registration, and Ebola response measures. In a few weeks, this group of CHWs will be trained in preventative and curative Child Health services and will soon be able to provide Integrated Community Case Management (iCCM) for malaria, diarrhea, and acute respiratory infections in children under five. Also during this time, a second cohort of CHWs will be recruited to serve the remainder of Rivercess County, a total of 39,000 community members across 282 villages. Once the second cohort of CHWs is trained, all people living in remote communities in Rivercess County (remoteness defined as a distance further than five kilometers from a health facility) will have access to primary health care via a professionalized CHW.

In addition to ongoing work to expand services and improve upon the quality of care that our existing CHWs are able to provide, Last Mile Health continues to work alongside the Liberia Ministry of Health's (MoH) Community Health Services Division (CHSD) and local County Health Teams (CHTs) to plan and prepare for joint implementation of the National CHW Program that is set to roll out in early- to mid-2016. Part of a broader Health Sector Investment Plan, the CHW Program will deploy a Community Health Worker to every village in Liberia that lies more than five kilometers from the nearest health facility, ensuring that approximately 1.2 million Liberians have access to lifesaving health services – in some cases, for the first time in their lives.

Website: www.lastmilehealth.org

La Chaine de l’Espoir

Mission: La Chaine de l’Espoir (based in France) has an operation in Cambodia – Cardiac Children’s House (CCH) – that is committed to improving access to free or affordable diagnostic and treatment for underprivileged children suffering from heart disease.

Partner since: 2014

Description:

- Cardiac Children’s House was opened in 2003 to fill in the large gap between healthcare service and pediatric heart disease in Cambodia.
- There is a high rate of congenital heart disease due to lack of prenatal screening and high incidence of valvular disease due to no systematic antibiotic treatment.
- 92% of patients who reside in rural areas are not able to easily commute to receive healthcare services and miss follow-ups, which leads to poor diagnosing and opportunities to treat.
- Newer equipment was installed a month after Deerfield support last year to offer higher efficiency, accuracy, lower overall cost, and training.
- La Chaine is helping Cambodia become autonomous on the cardiac surgery level by training every link of the care chain.
- Unfavorable exchange rate from Euros to Dollars meant CCH’s budget provided by La Chaine de l’Espoir has dropped dramatically. From November to December 2014, monthly surgery volumes dropped from 18 to five.



2015 Funding: \$75,000

Project Funded: [Funding an additional surgery program for 25 Tetralogy of Fallot patients](#)

Update: Deerfield’s investment funded an additional cohort of 25 ToF patients. By the end of 2015, 14 surgeries were carried out successfully, representing 56% of this ongoing project. The additional 11 patients are scheduled to receive treatments by March 2016.

In addition to this, on December 31st, 2015, the Cardiac Children’s House management was transferred from La Chaine de l’Espoir to the national counterpart, the public Calmette Hospital, in order to ensure the sustainability of this cardiac pediatric unit. La Chaine de l’Espoir will continue technical support by sending visiting expert missions and funding external cardiac consultations as well as the monthly surgery program.

Website: www.chainedelespoir.org

Muso

Mission: Each year, over 6,000,000 children die before their fifth birthday, mostly from preventable causes. Project MUSO seeks to develop scalable solutions to the tragedy of early childhood mortality.

Partner since: 2015

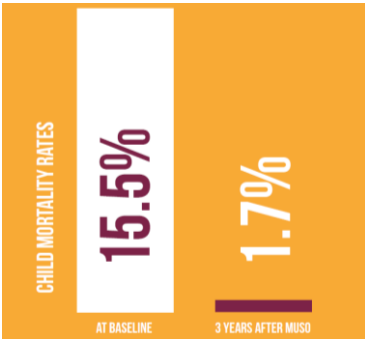
Description:

- In 2008, MUSO launched a pilot of its innovative, community-driven healthcare delivery system in a single peri-urban region of Mali.
- Combining three key approaches - proactive search by trained community health workers to identify healthcare needs early, doorstep care, and rapid access clinics - MUSO demonstrated a drop in early childhood mortality from 15.5% to 1.7% in three years.
- This is the largest such improvement ever reported, and results were published in the peer-reviewed journal PLoS ONE in 2013.

2015 Funding: \$75,000

Project Funded: [Project MUSO expansion](#)

Update:



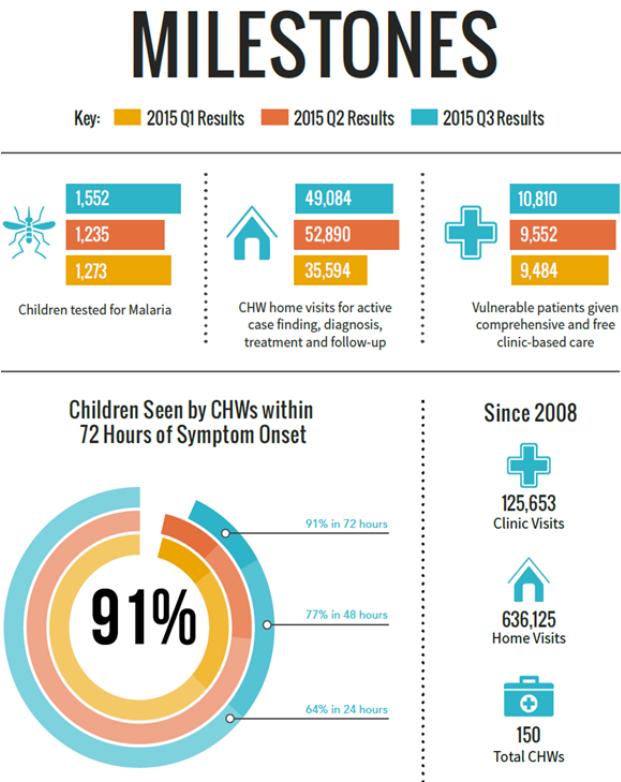
CHILD MORTALITY RATES

15.5% AT BASELINE

1.7% 3 YEARS AFTER MUSO

In 2015, Deerfield granted \$75,000 to fund a portion of MUSO’s three-year scale-up of its successful healthcare delivery pilot program. Muso’s original intervention site, in Yirimadjo, is experiencing population growth, and MUSO has expanded its staffing there to serve 140,000 citizens (vs. an originally expected 100,000). Meanwhile, identification of contractors and architects is nearly complete for the construction of the first new health center, at Bankass. This lead replication site is expected to be ready for operation in early 2016. By conducting here a randomized controlled trial, enrolling 22,000 people, to prospectively assess the impact of Muso’s interventions, Muso will have the opportunity to help shape the Malian government’s recent commitment to implement a nationwide program to add 5,000 Community Health Workers.

Website: www.projectmuso.org



Shining Hope For Communities

Mission: Shining Hope for Communities (SHOFCO) combats gender inequality and extreme poverty in urban slums by linking tuition free schools for girls to holistic social services for all. They empower urban communities to thrive through health, education, and economic opportunities while creating the next generation of female leaders through their free schools for girls.

Partner since: 2013

Description:

- Mathare, Kenya's second largest slum, is overwrought with a densely growing population. In one area alone, 10,000 people occupy approximately 600 households.
- Residents have inadequate access to services like education, health, and water, but also face the challenge of being further ostracized from society, perpetuating a culture of poverty and deprivation of freedom.

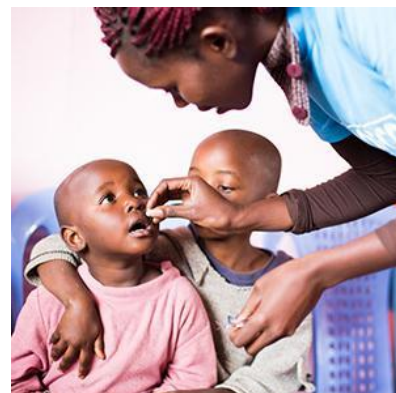
2015 Funding: \$75,000

Project Funded: Capital and operational expenses for 2nd satellite clinic in Kianda, Kibera and a new clinic in Mathare, as part of expansion of SHOFCO health programs in Mathare, and the purchase of 4 portable ultra sound machines

Update: Deerfield's investment allowed funding for medical equipment, food, transportation, community outreach, community health workers, and program officers. This investment replicated the successful model implemented with Deerfield's investment the previous year in Kibera, thereby capitalizing on current staff who trained Mathare counterparts on the operations and strategy behind their programs and who are now serving in a mentorship capacity.

The official launch of the Kianda, Kibera satellite clinic was held on August 25, 2015. Since opening, the Kianda clinic has been treating approximately 80 patients daily. A temporary clinic in Mathare has been open since September. The clinic is treating approximately 700 patients monthly, 70% of which are children under the age of 12.

The ultrasound machines has been a long awaited service and need at the clinics. These machines substantially improve patient service and boosts patient take-up rates at the clinics.



Website: www.shofco.org

Shanghai Soong Ching Ling Foundation

Mission: Shanghai Soong Ching Ling Foundation (SSCL) is committed (for over 30 years) to improving the lives of underprivileged women, children and other individuals in need by funding and implementing sustainable public welfare projects in healthcare, education and culture in China.

Partner since: 2015

Description:

- The SSCL Foundation pays special attention to maternal and infant safety in poverty stricken areas by providing medical equipment, offering medical training and free admission for delivery, reducing maternal and neonatal mortality.
- They collaborate with community health clinics in economically developed areas to address unmet medical needs for children, such as offering free preschool health screening if public insurance does not cover these screenings.

- There has been an increase in myopia and cavities among preschoolers due to lifestyle change, lack of awareness of dental care by grandparents who are the primary caregivers, and cultural belief that children's care should be cheap/free or government funded.
- Only eye charts are being used in kindergartens, where health screenings occur.
- No fluoride treatment is publicly funded.
- Public health expenditures per child in the Pudong district is 1/5 to 1/3 of that of other districts in Shanghai (RMB 20 (\$3) per child in Pudong District vs. RMB 90 (\$15) per child in Jing'an District), essentially covering only vaccinations for newborns.



2015 Funding: \$75,000

Project Funded: [Pudong New District Preschooler Dental/Vision Screening Program](#)

Update: Deerfield funding supports part of a one year project covering 36,613 preschoolers' instrument-based vision screening (once yearly), and fluoride treatment (twice yearly).

SSCLF aims to gather data after the first year to evaluate the effectiveness of these efforts and to ultimately publish a white paper to influence public healthcare policy.

Website: www.ssclf.org

Coalition for the Homeless

Mission: The Coalition for the Homeless is the nation's oldest advocacy and direct service organization helping homeless men, women and children. We believe that affordable housing, sufficient food, and the chance to work for a living wage are fundamental rights in a civilized society. Since our inception in 1981, the Coalition has worked through litigation, public education and direct services to ensure that these goals are realized.

Partner since: 2011

Description:

- The Coalition for the Homeless is the nation's oldest advocacy and direct service organization helping homeless men, women and children.
- It has 11 frontline programs ranging from food service, to crisis intervention, to child advocacy.

2015 Funding: \$65,000

Project Funded: [Salary of a Child Advocate](#)

Update: The Child Advocate position works directly with homeless families who are having difficulty by providing documentation to secure eligibility for shelter, triaging, and assessing families' cases, and advocating on their behalf. In 2015, the Child Advocate guided approximately 300 families through the process reclaiming their lives.

Website: www.coalitionforthehomeless.org

Many Hopes

Mission: Many Hopes is a long-term strategic solution to the corruption and poverty that exploits the most vulnerable girls and boys. When the poorest children in the world have education and confidence and network they will be free from governments that exploit them and free to make their own choices. They will not need charity.

Partner since: 2015

Description: Founded in 2007 by British Journalist Thomas Keown and Kenyan Journalist Anthony Mulongo, Many Hopes invests in sustainable community development on five related fronts, one community at a time: girls' homes, quality school, boys' homes, medical facility and community water. They believe in starting small but thinking big. In the last seven years Many Hopes has grown to include 100 volunteers across seven U.S. and U.K. volunteer chapters. They have built their first four homes for 60 girls, purchased land and begun construction on their first school for 900 students, and raised funds for land and construction for their first four boys' homes.



2015 Funding: \$50,000

Project Funded: **Provide healthcare for 15 orphaned girls in Kenya, including medical and psychological care**

Update: In 2015, Deerfield started a new partnership with Many Hopes with a grant of \$50,000 to provide and cover healthcare services and expenses for orphans living in the Many Hopes homes. The grant covers on-site psychological care, regular medical check-ups and disease prevention, and nutrition care for the 60 girls currently living in the orphanage. So far, between August and November 2015, 12 out of the current 55 former street girls were provided with physical and emotional healthcare and healing.



Website: www.manyhopes.org

Réseau des Entrepreneurs Solidaires

Mission: Fight against poverty by supporting secluded people in underdeveloped countries.

Partner since: 2015

Description:

- RES was founded in 2005, and is based on the principle of gratuity. RES builds on the local presence of 600 nuns and a priest from 42 congregations present in 10 countries.
- RES functions with volunteers only. Since no salary is paid, every dollar given to RES goes to the poor.
- The 106 RES volunteers are involved in 138 projects in 10 countries, giving access to water, education, health and nutrition.

*Sisters from St Vincent Paul Charity,
Vohipeno, Madagascar*



2015 Funding: \$50,000

Project Funded: Drug supply in 25 centers in Madagascar

Update: In July and August, RES has delivered drugs to 10 out of 25 health centers most in need in Madagascar. The remaining 15 centers were all been visited by the RES “guardian angels” in October and November. The purpose of the visit was to identify their needs in terms of drugs supply. Centers have to fill in a technical and medical specification questionnaire to be returned to Pharmacie Humanitaire Internationald (PHI). PHI can then process the order and deliver the drugs to RES. All 15 remaining centers are expected to have returned their questionnaire to PIH by end of 2015, and will receive their drug supply in the first half of 2016.



*Leprous woman healed in
Marana, Madagascar
Sisters of Saint Joseph de Cluny*



*Manantenina, Madagascar, undernourished kids
Sisters of charity of saint Vincent de Paul*

The remoteness and lack of internet equipment or coverage make the delivery of the questionnaire and the orders difficult and lengthy. RES guardian angels visit each center every year at their own expense to provide support to the nuns in completing the required questionnaire, and to obtain on-site reports of the actual use of medicine sent by RES and financed by the Deerfield Foundation.

Website: www.entrepreneurs-solidaires.ch

Terre des Hommes

Mission:	Improve living conditions of the most vulnerable children in a concrete and sustainable manner. Work to enable children to grow up and develop in a safe environment.
Partner since:	2015
Description:	<ul style="list-style-type: none"> • Terre des Hommes (TdH) was founded in 1960 by Edmond Kaiser. He was shocked by the conditions children lived in during the war in Algeria. His mission was to save children, either in their hometown, or to bring them to Switzerland for treatment. • Works on two levels to help children: 1) providing direct aid worldwide for children in need, and 2) serves as an ambassador for children's rights in Switzerland and throughout the world, through campaigns that promote the fundamental rights of children or that denounce violation of these rights. • TdH boosts healthcare systems, combats malnutrition, monitors pregnant women and nursing mothers, and improves access to water and hygiene. They also offer children suffering from illnesses that are incurable in their own countries the opportunity to have surgeries and treatment in Switzerland. • In 2013, they were present in 36 countries, and ran 103 projects aiming at improving living conditions among the most vulnerable children.
2015 Funding:	\$50,000
Project Funded:	Contribute to the reduction of mortality of small children and mothers through assistance in hospitalization, treatment, training of local health personnel and provision of medical equipment in the municipalities of El Mina and Rhiad, Nouakchott, Mauritania
Update:	<p>Staff of the Regional Directorate for Healthcare Services were trained on the Integrated Management of Childhood Illnesses (IMCI) protocol in October 2015. The aim of the protocol is to identify and treat the 5 deadliest illnesses that affect small children. From January to October 2015, 20,798 children have been diagnosed and treated as part of this protocol. This represents 28% of the global project objective.</p> <p>In addition to the medical staff, 34 community volunteers have been trained on the IMCI protocol. These 34 volunteers began working in their neighborhoods by animating groups and holding interpersonal meetings with women. Themes covered include personal hygiene, breastfeeding, balanced diet with local food, prevention of diarrhea in their children, malaria, respiratory infections, benefits of vaccination etc... From January to October 2015, 17,556 pregnant women and nursing mothers received prevention training and awareness messages on these topics, which represents 84% of project objective.</p>
Website:	www.tdh.ch



Trained staff doing on-site visits

Village Health Works

- Mission:** Village Health Works seeks to provide quality, compassionate health care in a dignified environment while also treating the root causes and social determinants of illness, disease, violence, and neglect. They do so in collaboration with those they serve and partners who share their beliefs.
- Partner since:** 2015
- Description:**
- Village Health Works focuses first on treating illness through primary health care services, then uses its community engagement to expand that care with community development programs focused on sustainable agriculture, education, and gender-based violence prevention.
 - Since 2007, they have held more than 92,000 patient consultations; they see approximately 170 patients per day, in addition to inpatients in their 40-bed wards.
 - Their dedicated clinical team, community health workers, and birth monitors also provide invaluable follow-up and wider community health advocacy efforts.
- 2015 Funding:** \$50,000
- Project Funded:** **34% of the Annual Purchase of Medicine and Medical Supplies**
- Update:**
- So far, 452 children under the age of five were hospitalized for severe or moderate malnutrition, with the overarching goal in 2015 to continue to see less than 25% of total patients (<15 years) diagnosed with malnutrition.
 - Through the third quarter of 2015, there has already been a 24% increase in patients utilizing VHW's family planning methods (295 vs 238 patients in 2014), far superseding the yearly goal to increase by 5%!
 - Through the third quarter of 2015, 1,540 patients (vs 2,679 in 2014) had received deworming medicine, with the original goal being to increase by 5% by year end. The goal to increase this by 5% is too early to gauge, but in retrospect might be harder to achieve given there was a large increase the previous year as a result of a newly implemented process to provide treatment for deworming in any case deemed suspicious by VHW.
 - So far, 3,322 patients have already been screened for HIV, well over the goal to increase this by 5% vs 2014 (2,536)!
- Website:** www.villagehealthworks.org



One of the head physicians meeting with diabetes and hypertension patients



Training on the new CHW system for referrals and reporting

Harlem Health Promotion Center

Mission:	The Harlem Health Promotion Center's (HHPC) mission is to use community partnerships, health training, program evaluation, information technology, and infrastructure to improve the health and well-being of the Harlem community, and effectively communicate and disseminate public health practices to Harlem's residents.
Partner since:	2014
Description:	<ul style="list-style-type: none"> • HHPC uses its resources to provide high-quality prevention research aimed at implementing and evaluating sustainable, effective, community-based strategies that address health disparities and priorities in the Harlem and Upper Manhattan communities. • HHPC's direct service arm uses trained health educators to provide outreach, education, counseling, and screening in community settings. • HHPC provides medical and psychological services for young people ages 13 to 24 living with HIV as well as those at high risk for HIV and sexually transmitted infections. • HHPC uses online platforms to teach consumers about chronic disease and general wellness issues. • HHPC is under the administration of the Department of Sociomedical Sciences in the Mailman School of Public Health at Columbia University.
2015 Funding:	\$25,000
Project Funded:	Continued funding of a part-time health educator and project coordinator for the Youth Access Program (YAP).
Update:	<p>Since the summer of 2015, Project Stay has identified several new partners, including the New Alternative for Homeless LGBT Youth, Argus Community House, Cascades and Manhattan Alternate Learning Center, and Bronx Community College, among others. These have allowed it to expand the care the organization it is able to deliver.</p> <p>Project STAY has been able to recruit six student volunteers from Columbia University's School of Nursing and five from Columbia University's Mailman School of Public Health to assist in delivering community health-education workshops, conducting outreach, screening and linkage to care.</p>
Website:	www.mailman.columbia.edu/academic-departments/centers/harlem-health-promotion-center

2015 Investment Breakdown

CHF	\$800,000
PIH	\$500,000
Possible Health	\$400,000
Health Builders	\$200,000
Little Sisters	\$180,000
The Water Trust	\$180,000
Covenant House	\$150,000
NY Foundling	\$150,000
The Family Center	\$125,000
Northside Center for Child Development	\$125,000
Last Mile Health	\$100,000
La Chaîne de L'Espoir	\$75,000
Muso	\$75,000
Shining Hope	\$75,000
Shanghai Soong Ching Ling Foundation	\$75,000
Coalition for the Homeless	\$65,000
Many Hopes	\$50,000
Réseau des Entrepreneurs Solidaires	\$50,000
Terre des Hommes	\$50,000
Village Health Works	\$50,000
Harlem Health Promotion Center	\$25,000
Total Investment	\$3,500,000

Contact Information

Deerfield Foundation

780 Third Avenue
37th Floor
New York, New York 10017

Phone: 212-551-1600
E-Mail: df@deerfield.com

2015-2016 Executive Committee Members:

Terence Karnal, President Emeritus
Sumner Anderson, President
Karen Heidelberger, VP
Gilan Megeed, VP
Nick Bishop, VP
Céline Audibert, VP
Lawrence Atinsky, VP
Cecile Jia Hu, VP
Bryan Sendrowski, Treasurer
Susan Polanco-Briceno, Secretary
Charlotte Williamson, Assistant Secretary